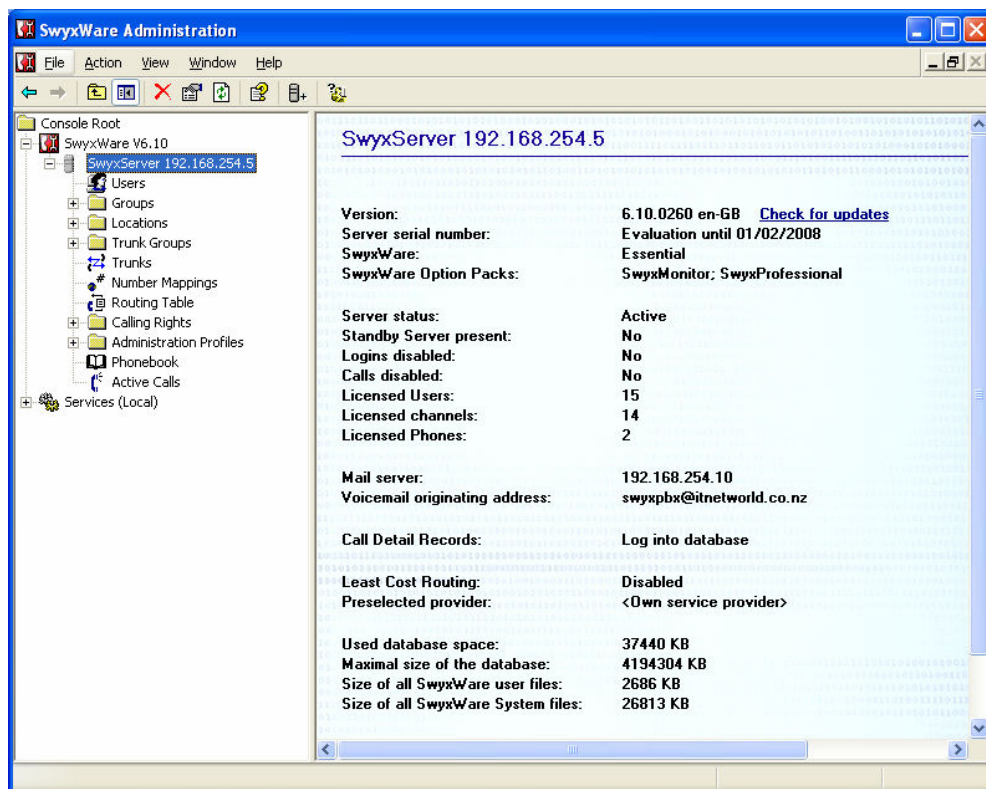




Swyx is a windows based IP PBX which works well with 2talk's platforms. By setting up a new SIP trunk, you can make use of the 2talk sip trunking.

Even small businesses can take advantage of far-reaching technology advancements in business communications. Converged /Voice over IP (VoIP) networks are now becoming mainstream for many companies as the associated business benefits have evolved from simple cost savings to encompass improved employee productivity and raised levels of customer service.

Below you can find a 5 steps installation instructions on how to add a 2Talk SIP trunk in the SwyxWare administration:



## 1. Add new location

**Auckland 028 Properties** (General tab):

A Location within SvyxWare defines all location specific settings like the time zone, the required public access code, the country and area codes.

This Location will be assigned to Users and Trunk Groups to define the required settings in terms of timely conditions and number conversion.

Location Information:

Location Name:

Description:

Set this Location as the "Default Location".  
All new Users will use this Location unless explicitly changed.

Limit inter-location calls

Maximum number of calls from/to this Location to other Locations:

**Auckland 028 Properties** (Codes and Prefixes tab):

Specify the respective codes and prefixes for this Location and define basic PBX settings.

Codes and Prefixes:

Own Country Code:

Own Area Code:

Prefix for international Calls:

Prefix for Long Distance Calls:

Private Branch Exchange related Properties:

Public Line Access Prefixes (separated by ':'):

Route undeliverable calls to Internal Number:

## 2. Add new trunk group

**tg2Talk Properties** (General tab):

Specify the SIP settings which are applicable for this Trunk Group.

The settings are prefilled with the default values of the Profile, defined on the "Profile" tab of the Trunk Group.

Profile:

Enable SIP Registration

Registrar:  Port:

Re-registration Interval:  Seconds

Enable STUN Support

STUN Server:  Port:

Proxy:  Port:

Realm:

DTMF Mode:

**tg2Talk Properties** (Profile tab):

The selected Profile specifies the type of connection this Trunk is using.

Profile:

Number Formatting

Conversion for outbound Calls:

Calling Party Number:

Called Party Number:

Conversion for inbound Calls if number type is Unknown:

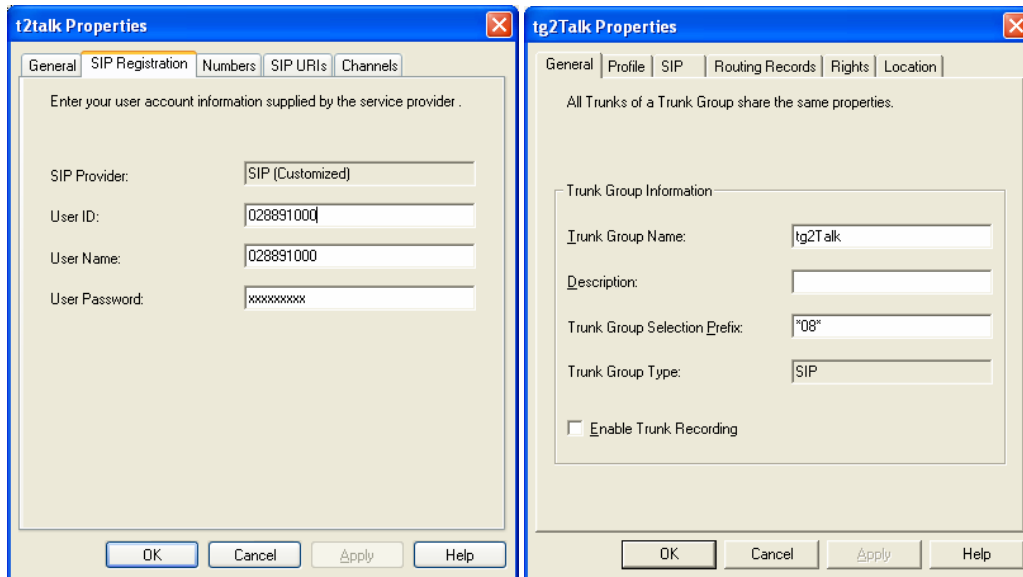
Calling Party Number:

Called Party Number:

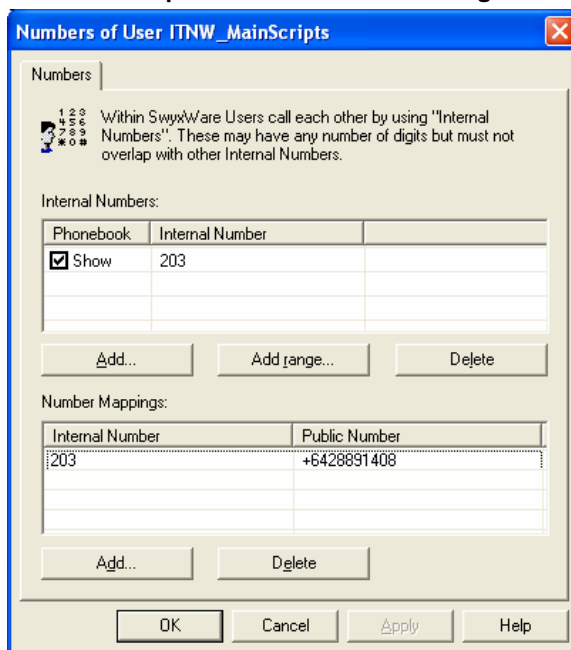
Master PBX Public Line Access Prefix:

Special Number Replacement:

### 3. Add a new trunk



### 4. Associate the public number to an existing user:



Note on Swyx: Swyx is the market leading provider of software based IP telephony solutions designed to meet the communications needs of businesses both small and large. The solution for small businesses, **SwyxWare Compact**, delivers a complete IP telephony solution for small businesses and autonomous branch offices with up to 10 employees. This solution is ideal for the business that is focused on excelling in their field of expertise rather than on growing the business. For medium-large enterprises, or small businesses that are planning to grow, **SwyxWare Essential** is the ideal platform. Providing a strong foundation on which businesses can build a telephony solution **SwyxWare Essential** can be enhanced through the addition of option packs that allow an organization to focus on business issues such as improving employee productivity and raising levels of customer service. [www.swyx.com](http://www.swyx.com) and [www.swyx-forum.com](http://www.swyx-forum.com)